

# 17326 Pioneer Boulevard

Artesia, CA 90701

5 Unit Strip Center On The Signalized Main And Main  
Intersection Of Artesia Boulevard And Pioneer Blvd



## Main & Main Signalized Intersection Strip Center

OFFERING MEMORANDUM

KIRK GARABEDIAN

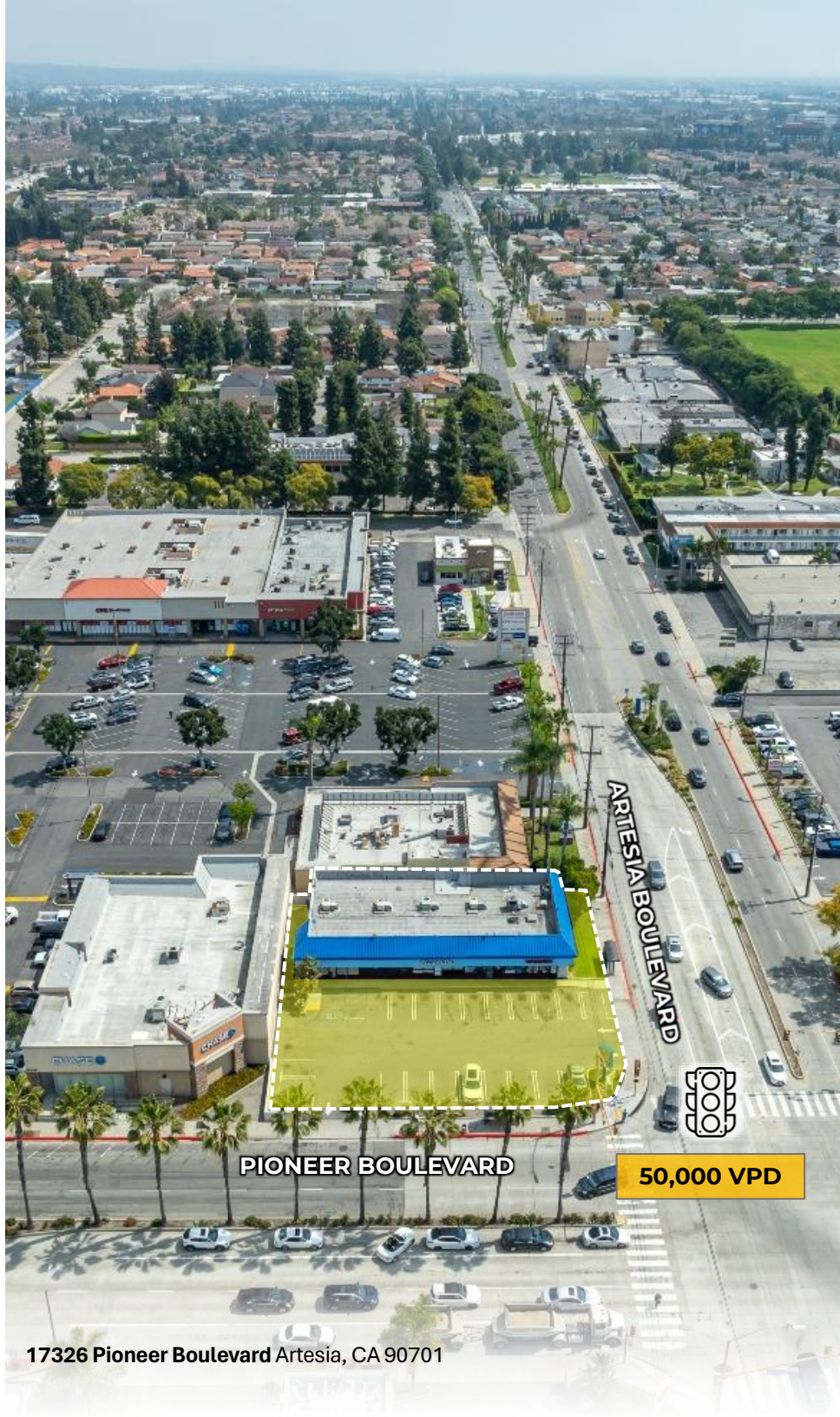
818.298.8810 • [kirkg@kw.com](mailto:kirkg@kw.com)

DRE#01216376



# Property Summary

ADDRESS	▪ 17326 Pioneer Blvd., Artesia, CA 90701
LISTING PRICE	▪ <b>\$3,250,000</b>
CURRENT CAP RATE	▪ Currently at 40% Occupancy
PROFORMA CAP RATE	▪ 6.23%
ESTIMATED PROFORMA RENT	▪ \$3.25 NNN
NUMBER OF UNITS	▪ 5
NUMBER OF VACANT UNITS	▪ 3 (60% of the Property or 3 Units)
PRICE PER SQUARE FOOT	▪ \$650
LAND PRICE PER SQ. FOOT	▪ \$209
PRICE PER UNIT	▪ \$650,000
BUILDING AREA ± SF	▪ 5,000
LAND AREA ±	▪ 15,536
YEAR BUILT	▪ 1984
ZONING	▪ Commercial Planned Development (CPD)
TRAFFIC COUNTS	▪ Pioneer Blvd: 33,769 2018 MPSI Artesia Blvd: 18,248 2018 MPSI
PARCEL #	▪ 7033-004-029



17326 Pioneer Boulevard Artesia, CA 90701

# Perfect for an Owner-User

17326 PIONEER BOULEVARD



VACANT

DENTIST

VACANT

DONUT SHOP



## Investment Highlights



- Main and Main Signalized Intersection Strip Center



- Artesia and Pioneer Boast 50,000+ Vehicles



- 5-Total Units with 3-Vacancies (60% of the Building)



- Great SBA Loan and Owner-User Opportunity



- 5,000 SF Building Situated on 15,500 SF of Land



- 21-Parking Spaces for a 4:1 Parking Ratio

We are pleased to offer a 5-unit strip center on the signalized main and main intersection of Artesia Boulevard and Pioneer Blvd in Artesia, California. This property is approximately 5,000 Square feet, constructed in 1984, and situated on 15,500 square feet of land. There are 3-units, or 60% of the property, that's currently vacant. This presents an opportunity for an owner-user to qualify for an SBA loan as an owner-occupied property.

Alternatively, an investor can re-tenant the asset with a national tenant who is attracted to the high traffic counts and strong visibility. The location boasts an unparalleled combined traffic counts of over 50,000 vehicles per 2018 MPSS estimates. Being less than 500-feet from the 91 Freeway and 1-mile to the 605 Freeway, makes this location extremely commuter friendly.

The immediate location is surrounded by National retailers including Chase Bank, Walgreens, Starbucks, Stater Bros and many more. Pioneer Boulevard is the main retail arterial through Artesia and the ingress and egress through the Pioneer and Artesia is convenient and easy. This quality asset and location does not come on the market very often and is a rare offering in today's market.



macy's  
NORDSTROM

24 FITNESS

NORDSTROM  
rack

Harkins  
THEATRES

T.J. maxx

Valley Christian  
High School

Cerritos Iron-  
Wood Nine Golf  
Course



Amberwood  
Business Park

Gahr High School

Plaza  
183

Luther Burbank  
Elementary

Public Storage

LONDON'S  
Pub & Grill

Concord  
Place

286,892 VPD



50,000 VPD

Hanmi Bank



33,769 VPD

**SUBJECT**



Walgreens

PIONEER BOULEVARD

STATER BROS.  
markets.

ARTESIA BOULEVARD





17326 Pioneer Boulevard



17326 Pioneer Boulevard Artesia, CA 90701



# Rent Roll

17326 PIONEER BOULEVARD

Suite	Tenant	Square	% of	Lease Term		CURRENT & PROFORMA RENT (3)			ESTIMATED NNN COSTS (3)	
		Feet(2)	Property	Begin	End	Monthly	PSF	Type	Monthly	PSF
17328	Vacant	979	20%	-	-	\$3,182	\$3.25	NNN	\$1,162	\$1.19
17330	Vacant	1,000	20%	-	-	\$3,250	\$3.25	NNN	\$1,187	\$1.19
17334	Dentist (1)	1,000	20%	01/01/15	12/31/29	\$3,750	\$3.75	NNN	\$900	\$0.90
17336	Vacant	1,000	20%	-	-	\$3,250	\$3.25	NNN	\$1,187	\$1.19
17340	US Donuts (1)	1,000	20%	09/01/09	08/31/29	\$3,832	\$3.83	NNN	\$800	\$0.80
<b>OCCUPIED UNITS TOTAL</b>		<b>2,000</b>	<b>40%</b>			<b>\$7,582</b>	<b>\$3.44</b>		<b>\$1,700</b>	<b>\$0.85</b>
<b>VACANT UNITS TOTAL</b>		<b>2,979</b>	<b>60%</b>			<b>\$9,682</b>	<b>\$3.25</b>		<b>\$3,535</b>	<b>\$1.19</b>
<b>TOTAL MONTHLY GROSS RENT</b>		<b>4,979</b>	<b>100%</b>			<b>\$17,264</b>	<b>\$3.40</b>		<b>\$5,235</b>	<b>\$1.05</b>
<b>TOTAL ANNUAL GROSS RENT + PROFORMA</b>						<b>\$207,165</b>	<b>\$40.75</b>		<b>\$62,820</b>	<b>\$12.56</b>

## NOTES

- (1) Early Termination Clause in Lease.
- (2) Square Footage and references to square footage are estimates only. Unit sizes have not been verified by Seller or Brokers.
- (3) All Proforma Rents, Expenses, CAM Charges are all estimates and projections only; neither Broker nor Seller can guarantee such results.



# Artesia, CA

*Artesia is a city in southeast Los Angeles County, California. The city was incorporated in 1959 and is one of Los Angeles County's Gateway Cities. Neighboring cities include Cerritos and Norwalk among others.*

As of 2023, the city has a total population of 16,106 and an average household income of \$109,092. The city blends suburban tranquility with vibrant cultural influences, making it a sought-after location for families and professionals alike. Artesia has great access to major freeways (91 & 605) and public transportation options, ensuring seamless connectivity within the Los Angeles Region.



**16,106**  
POPULATION



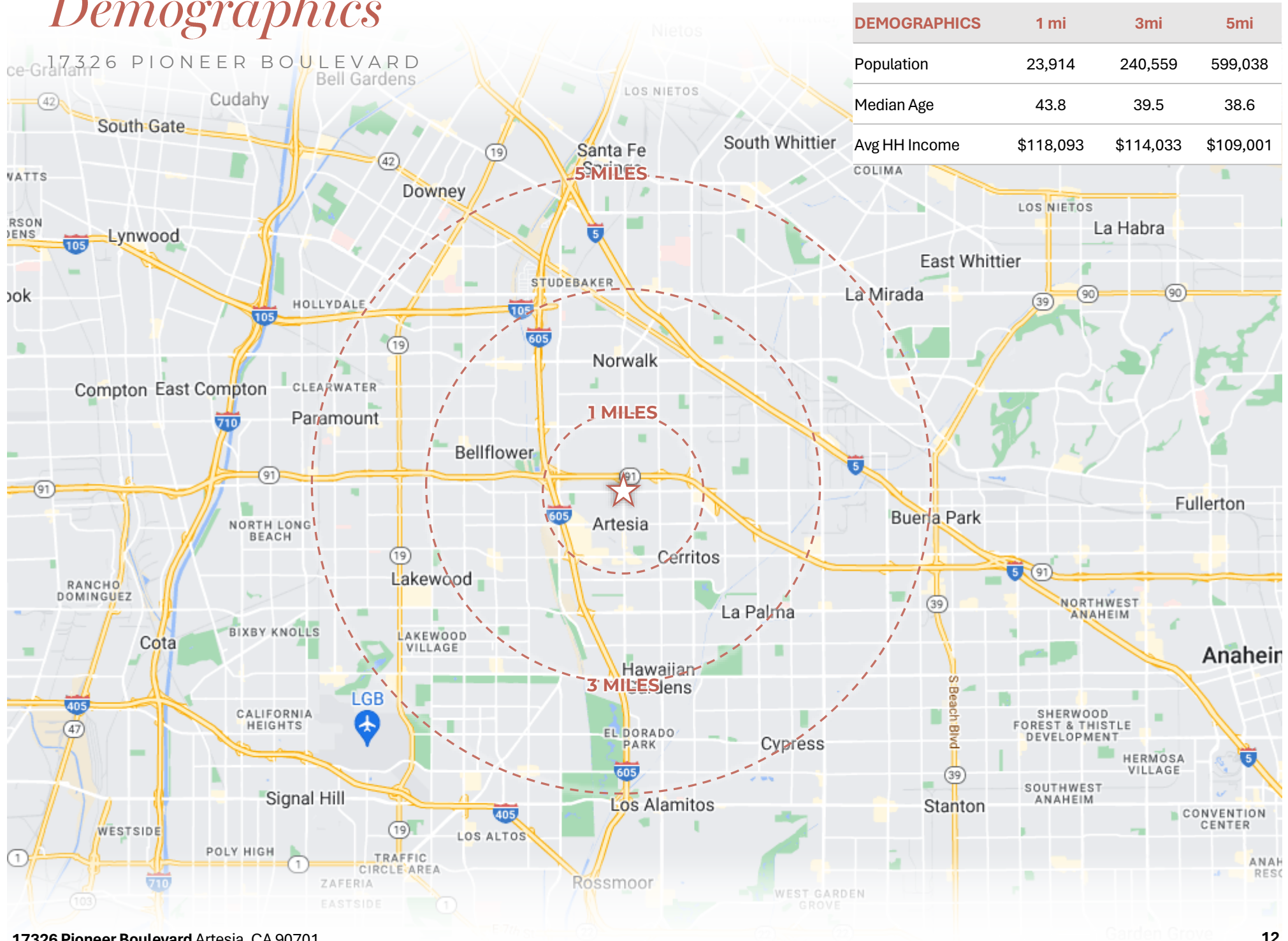
**\$635,000**  
MEDIAN HOME PRICE



**\$83,321**  
AVG HH INCOME

Although the population is relatively stable at approximately 16,000 residents, some growth is occurring. Since the city is essentially built out, it is now looking to build up and make the best use of the space it has. The city is working to implement a couple of large smart growth projects that are designed to improve the quality of life in the city.

# Demographics



DEMOGRAPHICS	1 mi	3mi	5mi
Population	23,914	240,559	599,038
Median Age	43.8	39.5	38.6
Avg HH Income	\$118,093	\$114,033	\$109,001

17326 Pioneer Boulevard Artesia, CA 90701

# Location Profile

**PIONEER BOULEVARD:** Artesia features an International Cultural District, a stretch of Pioneer Boulevard known as Little India that is home to mom-and-pop shops, high-end fashion boutiques, glamorous jewelry, restaurants and more. In addition to the shops, Pioneer Blvd remains a staple destination to stop by on a Saturday or Sunday for a self-guided Indian food tour.

**CERRITOS MALL:** Located between bustling LA County and vibrant Orange County, Los Cerritos Center offers a little something for everyone. With top-tier stores including Apple, Nordstrom, Zara, MAC, and Lululemon, as well as dining and entertainment destinations Cheesecake Factory and North Italia, the center is the go-to destination for Southern California shoppers.

**HERITAGE PARK:** Heritage Park is an urban park in Cerritos, California that features a one-of-a-kind island playground. The park's island is a small replica of town where children can explore every hidden corner and room. The island also provides a great backdrop for photographs with a mini waterfall, a ship, and the flora that surrounds the island.

## THE GATEWAY CITIES

*The Gateway Cities are a group of over 20 distinct communities nestled between Los Angeles and Orange County. The region serves as a “gateway” between the two counties creating a strong local economy driven by the prominent Ports of Long Beach and Los Angeles. Millions of containers of cargo are transported monthly, facilitating the region’s growth in international trade. This has created a thriving industrial sector, translating into plentiful job opportunities for the 1.7 million residents in the region.*





Santa Fe Springs

Buena Park



Cerritos High Library

Cerritos High School

Kennedy STEM Academy



286,892 VPD

Juarez Academy of Engineering & Technology

Ross Academy of Creative and Media Arts Middle School

91 Fwy Center

Cerritos Medical Center

Rodeway Inn



50,000 VPD



SUBJECT

ARTESIA BOULEVARD



33,769 VPD

PIONEER BOULEVARD

# *17326 Pioneer Boulevard*

Artesia, CA 90701

KIRK GARABEDIAN

**O: 818.588.0072 | M: 818.298.8810**

Kirkg@kw.com | CA BRE: 01216376

All materials and information received or derived from KW Commercial its directors, officers, agents, advisors, affiliates and/or any third party sources are provided without representation or warranty as to completeness, veracity, or accuracy, condition of the property, compliance or lack of compliance with applicable governmental requirements, developability or suitability, financial performance of the property, projected financial performance of the property for any party's intended use or any and all other matters.

Neither KW Commercial its directors, officers, agents, advisors, or affiliates makes any representation or warranty, express or implied, as to accuracy or completeness of the materials or information provided, derived, or received. Materials and information from any source, whether written or verbal, that may be furnished for review are not a substitute for a party's active conduct of its own due diligence to determine these and other matters of significance to such party. KW Commercial will not investigate or verify any such matters or conduct due diligence for a party unless otherwise agreed in writing.

EACH PARTY SHALL CONDUCT ITS OWN INDEPENDENT INVESTIGATION AND DUE DILIGENCE. Any party contemplating or under contract or in escrow for a transaction is urged to verify all information and to conduct their own inspections and investigations including through appropriate third party independent professionals selected by such party.

All financial data should be verified by the party including by obtaining and reading applicable documents and reports and consulting appropriate independent professionals. KW Commercial makes no warranties and/or representations regarding the veracity, completeness, or relevance of any financial data or assumptions. KW Commercial does not serve as a financial advisor to any party regarding any proposed transaction.

All data and assumptions regarding financial performance, including that used for financial modeling purposes, may differ from actual data or performance. Any estimates of market rents and/or projected rents that may be provided to a party do not necessarily mean that rents can be established at or increased to that level. Parties must evaluate any applicable contractual and governmental limitations as well as market conditions, vacancy factors and other issues in order to determine rents from or for the property. Legal questions should be discussed by the party with an attorney. Tax questions should be discussed by the party with a certified public accountant or tax attorney. Title questions should be discussed by the party with a title officer or attorney. Questions regarding the condition of the property and whether the property complies with applicable governmental requirements should be discussed by the party with appropriate engineers, architects, contractors, other consultants and governmental agencies. All properties and services are marketed by KW Commercial in compliance with all applicable fair housing and equal opportunity laws.